

DVKR EXHAUST AIR VALVE

AIR MANAGEMENT SYSTEMS

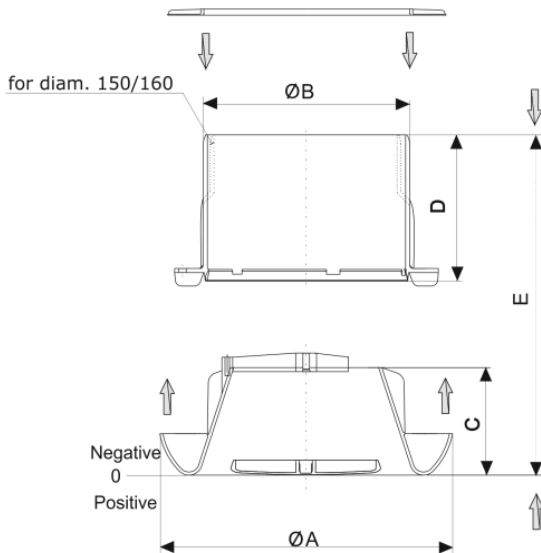


PRODUCT PROPERTIES

DVKR with integrated connection bush and retaining ring

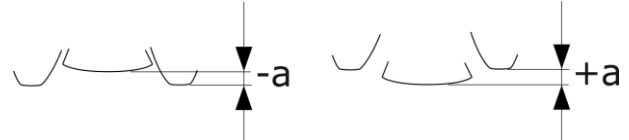
- Available in diameter 100, 125, 150/160 and 200mm.
- Manufactured from white polypropylene (RAL 9010).
- The valve is difficult to ignite (Will not burn with open flame)
- The valve material has a melting point between 150-180 °C
- The valve resists temperatures up to 110 °C without deformation
- High valve body improving air flow/less noise
- Closed disc
- No leakage between valve body and connection bush
- Connection bush also adapted for false ceiling panels
- Variable volume flow control
- Unique locking system between connection bush and valve body
- Suitable for rooms with high air humidity (e.g. kitchen, bathroom)
- Simple removal for cleaning

SPECIFICATIONS

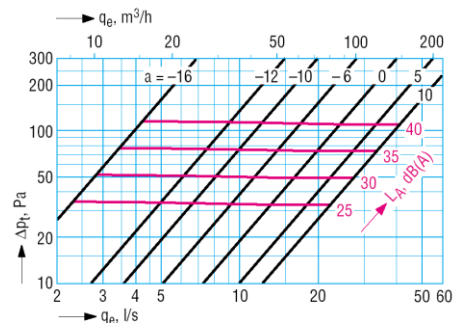


DVKR	A	B	C	D	E
100	141	99.5	52	70.5	84.5
125	167	124.5	52.5	70.5	84.5
150	202	149.5	52.5	70.5	84.5
160	202	159.5	52.5	70.5	84.5
200	240.3	199.5	52.0	70.5	84.5

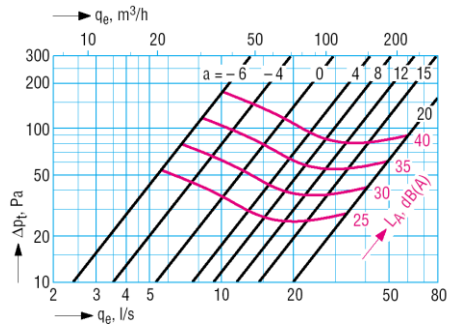
PRESSURE LOSS



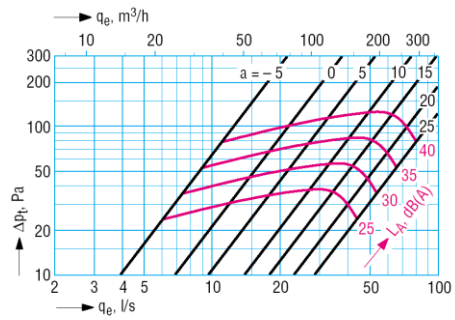
DVKR 100 mm



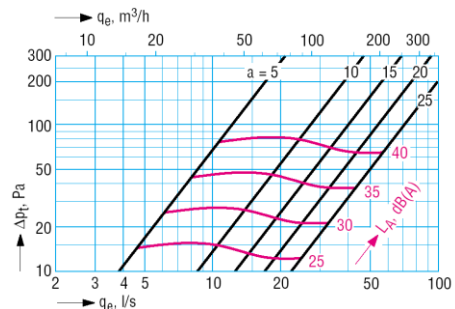
DVKR 125 mm



DVKR 150/160 mm



DVKR 200 mm

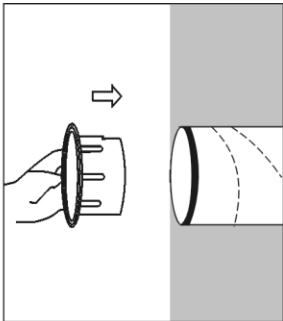




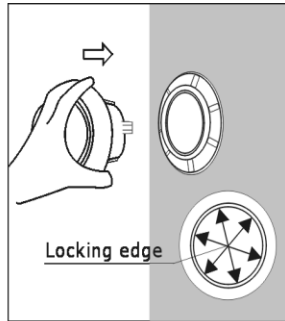
DVKR EXHAUST AIR VALVE

AIR MANAGEMENT SYSTEMS

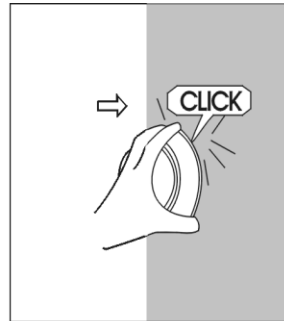
Mounting instructions



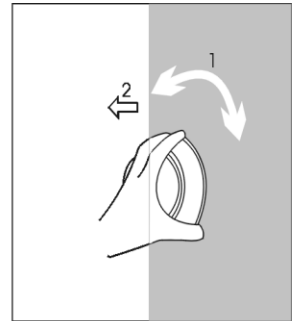
Installation of connection bush in wall



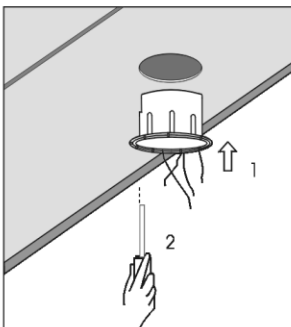
Installation valve in connection bush in wall. Ensure that one of the "valve wings" points towards the centre of a locking edge



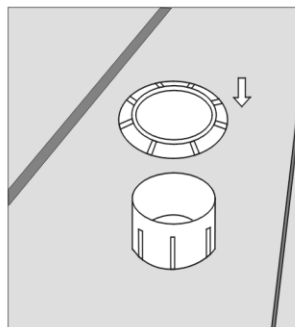
Press the valve until it clicks into position



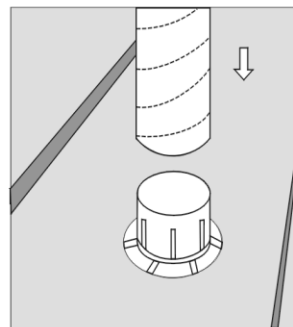
Removing the valve: rotate in either direction until valve disengages from connection bush. Pull straight out



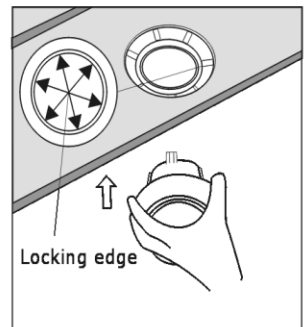
Installation of connection bush in false ceiling. Fixate with screws



Installation of retaining ring for false ceiling panel



After mounting flexible duct on connection bush:
1. Tape off with alu tape
2. Fixate with clamps



Installation of valve in connection bush. Ensure that one of the "valve wings" points towards the centre of a locking edge